

Komodo 2024

Sept 1-12

14 Guests
13 Days



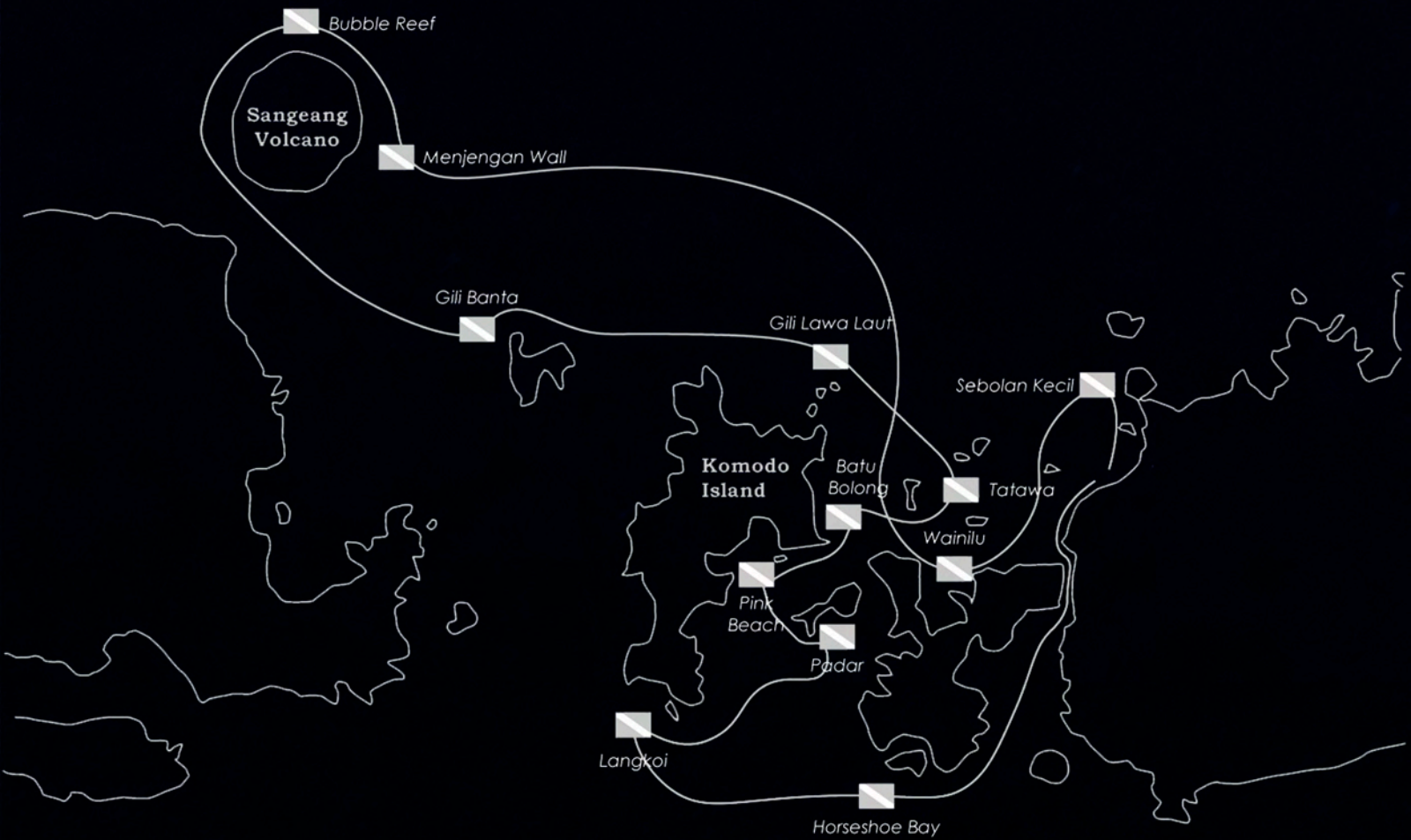
SHERPA

G L O B A L I O N S





LABUAN BAJO - LABUAN BAJO





THE TRIP

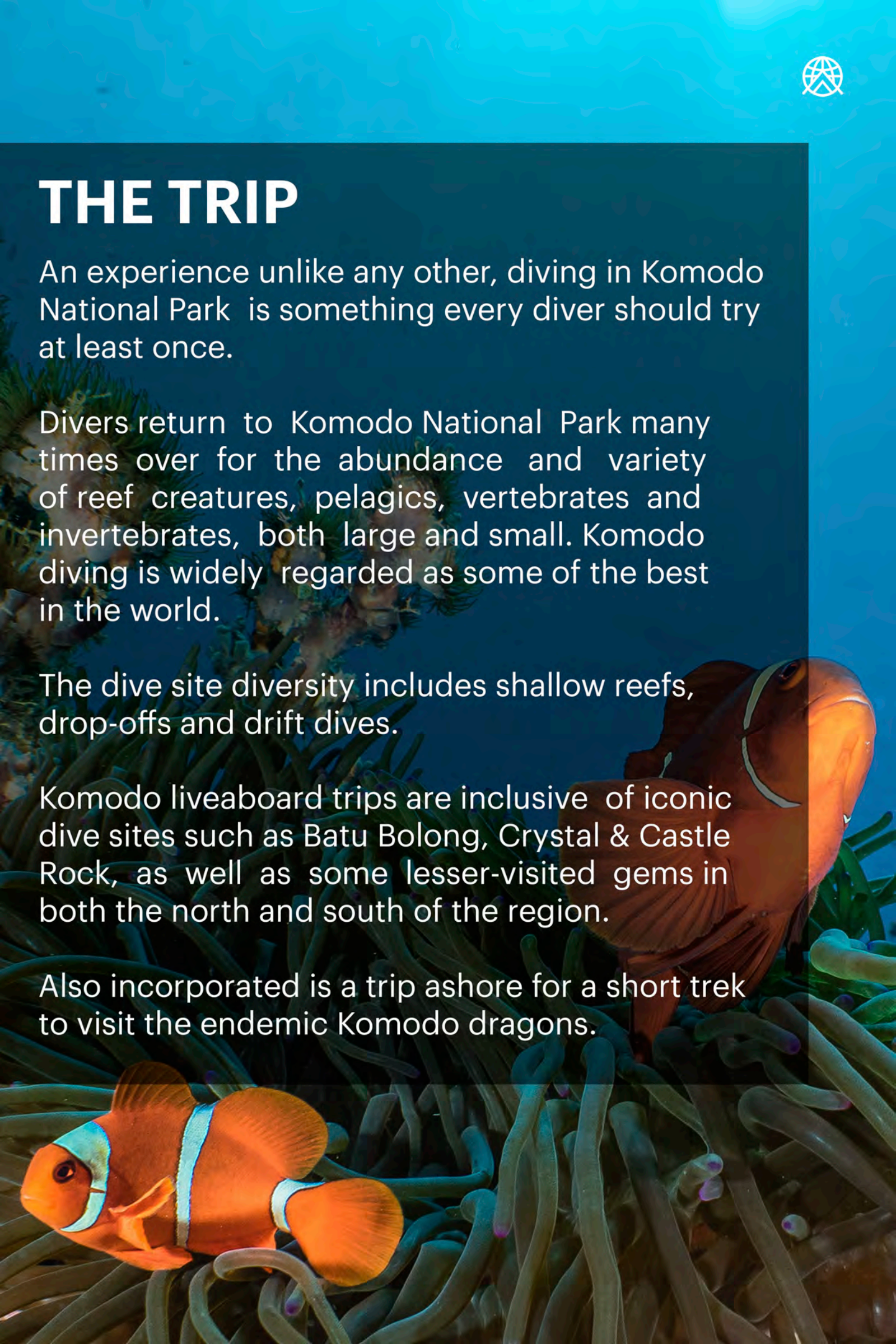
An experience unlike any other, diving in Komodo National Park is something every diver should try at least once.

Divers return to Komodo National Park many times over for the abundance and variety of reef creatures, pelagics, vertebrates and invertebrates, both large and small. Komodo diving is widely regarded as some of the best in the world.

The dive site diversity includes shallow reefs, drop-offs and drift dives.

Komodo liveaboard trips are inclusive of iconic dive sites such as Batu Bolong, Crystal & Castle Rock, as well as some lesser-visited gems in both the north and south of the region.

Also incorporated is a trip ashore for a short trek to visit the endemic Komodo dragons.





THE VESSEL

Damai II

MY DAMAI II has a deck length of 40 meters (131 ft) and a beam of 9 meters (29.5 ft) at its widest point. It has been built to an uncompromising standard and fitted with all the latest diving, navigation, and safety equipment to ensure the same level of service appreciated on Damai I. And, where possible it has been improved upon through additions such as satellite Wi-Fi capabilities.

Main Engine: 1x Mitsubishi 10M20-OA – 640 Hp serial

Gear Box – Twin Disc type: MGH 56 BLX-1

Auxiliary Engine: 2x Mitsubishi 6D14 Generator 60 Kva

1 x Yanmar 4TNV98T SILENT Generator 40 KVa (2015)

Compressor 1 unit Dive Compressor Poseidon PE-200

1 unit Dive Compressor Alkin C.A.T.230

2 unit Nitrox type Atlas Copco

Fuel Filters – Primary filter – Racor

Secondary filter – Racor

Pumps 2 unit Sea water pumps for toilet flush (Lakoni-Italy)

2 unit Fresh water pumps (Sanyo)

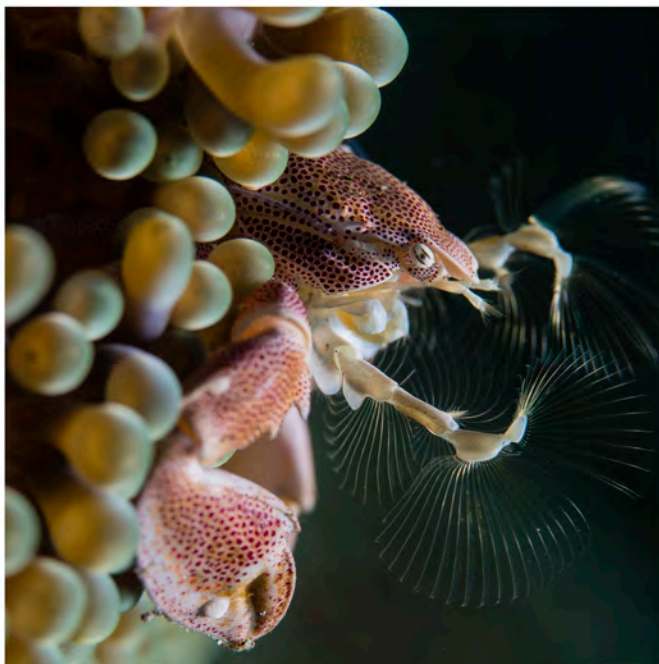
3 unit GS pumps

1 unit submersible pump for bilge (Nocchi-Italy)

1 unit fuel transfer pump (Taiko-Japan)













ITINERARY

- SEP 1** Arrival in Bali
Overnight in Bali
- SEP 2** Flight to Labuan Bajo
Embark Damai II
- SEP 3 - 10** Komodo Liveaboard
- SEP 11** Disembark in Labuan Bajo
Flight to Bali
- SEP 12** Flight out of Indonesia



YOUR HOST

SILVIA PEREZ DE LOS SANTOS

Born in Canarias and a true thalassophile, Silvia wore her first set of fins at 7 years old and never took them off. She started in the dive industry in 1999 at Alisub, her family-owned dive center in Alicante, and in 2008 her quest to explore the world took her to Indonesia, Thailand, Palau and the Philippines as Marketing & Operations Director for several world-class diving liveboards. Silvia thrives through savoring new places, learning new cultures and blending with all sorts of cultures.





RATES

Per Guest USD	SPACES	NET RATE	PARK FEES	TOTAL
Master Cabin UD	2	\$7,500	\$580	\$8,080
Master Cabin LD	2	\$6,900	\$580	\$7,480
Standard Cabin	10	\$5,750	\$580	\$6,330

Master Cabin UD (Upper Deck)

40sqm / Private Balcony / King-Size Bed / Daybed / Flat Screen Tv

Master Cabin LD (Lower Deck)

40sqm / Indoor Balcony / King-Size Bed / Daybed / Flat Screen Tv

Standard Cabin

20sqm / Double Bed + Twin Bed / Flat Screen Tv

PAYMENT SCHEDULE

30%	At the time of booking
30%	By February 1st, 2024
40%	By July 1st, 2024



INCLUDED

- Airport / hotel transfer (vicinity of the Marina - 20km)
- Kayaks
- Non-alcoholic drinks (water, tea, coffee, soft drinks)
- Beers
- Glass of wine at dinner
- Visit local villages, beaches
- Komodo dragon Trek

EXCLUDED

- International and regional flights
- In-transit hotels & meals
- Alcoholic beverages & espresso
- Gratuity for crew

COMPLIMENTARY FROM SHERPA GX

- Dive rental gear
- Nitrox
- Laundry service
- Massages

